

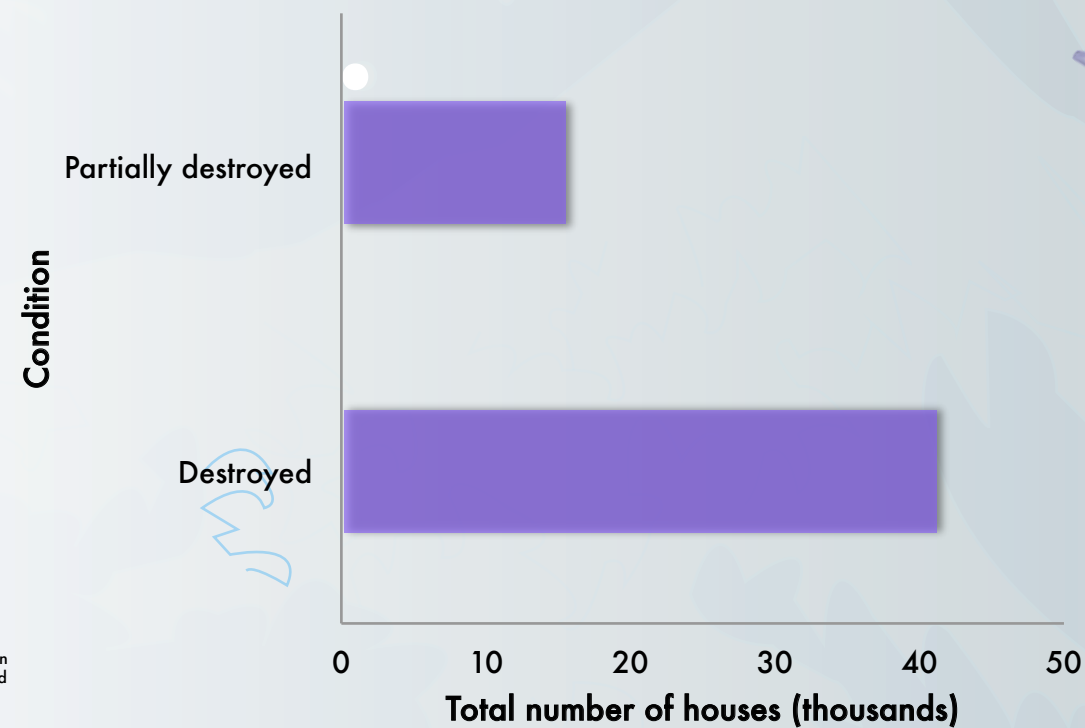
In the heart of Japan's disaster

On March 11, Japan experienced a 9.0 magnitude earthquake, the strongest in history.

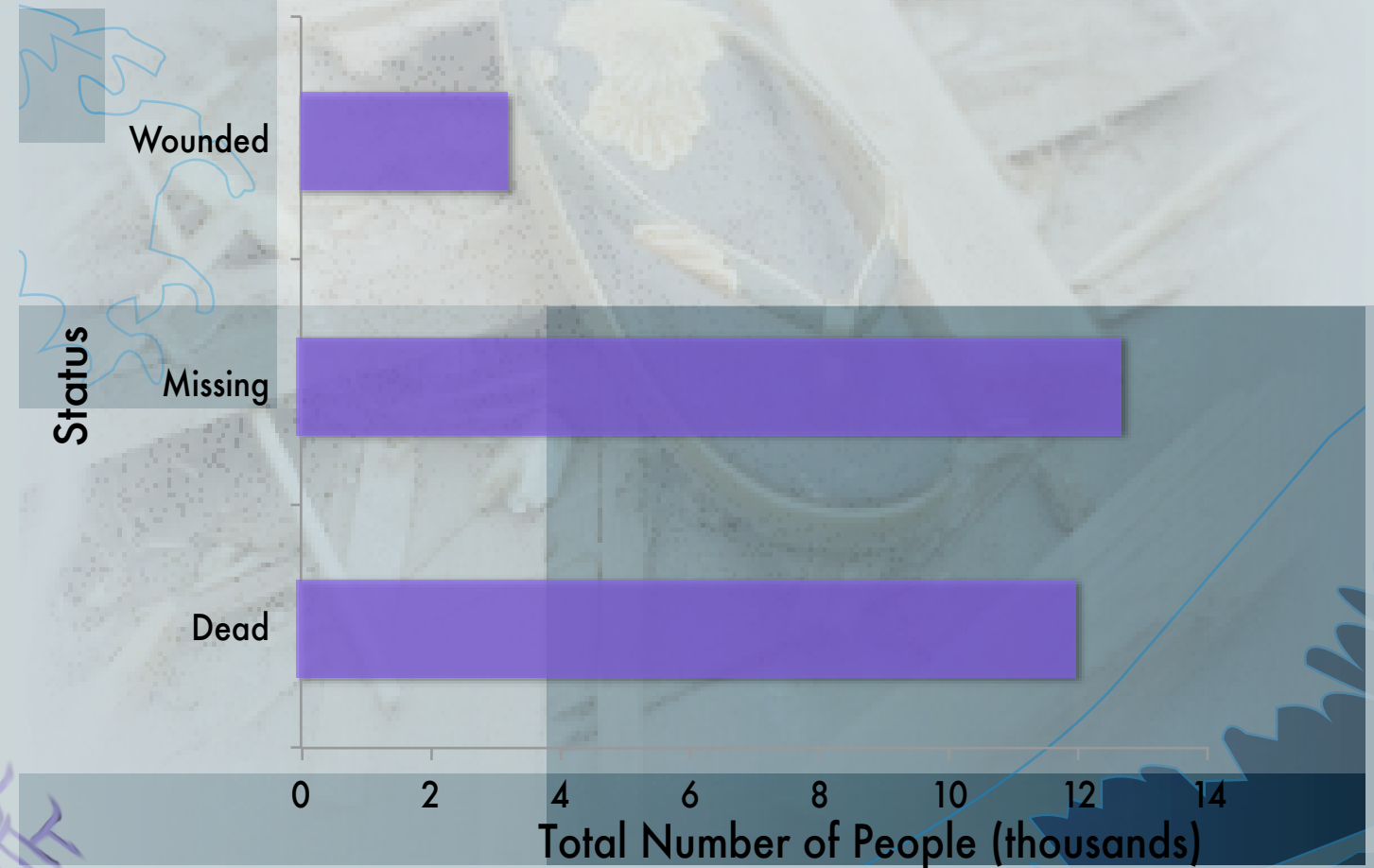
This quake triggered a tsunami that reached up to 23 feet in height and moved as far as six miles inland in some places. Thousands of buildings were destroyed along with thousands of lives.

希望
Hope

Status of houses affected



Status of people physically affected



Japan experienced disastrous situations that occurred after March 11. Aftershocks ranging from 3.0 to 8.5 magnitudes hit Japan in various locations. A volcano in southern Japan showed a potential to erupt, and, perhaps the most terrifying, radiation from three nuclear reactors leaked or showed the potential to leak. The radiation was found in food, water, the Pacific Ocean and various people who were hospitalized due to exposure. Aid from countries worldwide continues to be given to Japan, which hasn't seen such a catastrophic event happen within its country since World War II.

Since this situation continues to be an on-going situation, the data gathered was from April 7, 2011 at <http://earthquake-report.com/>.